

# MAGNETIC STRIPE READER

- Product availability and specifications depend on territory market strategy; all are subjects to change without prior notice.
- ZEBEX is the trademark of ZEBEX INDUSTRIES INC, all rights reserved.

## ZM-800 Series Magnetic Stripe Reader

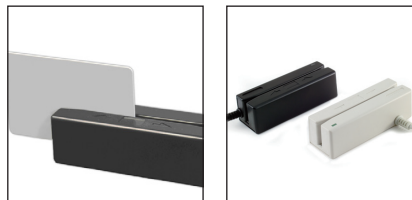
Designed with simplicity and performance in mind, the ZM-800 Series magnetic stripe readers from ZEBEX offer bi-directional reading capability that make the devices ideal for applications such as credit authorization terminals, point-of-sale terminals, personal computers, and banking terminals. ZM-800 Series stripe reader offers excellent data security through simple programming capability and it is capable of reading and automatically distinguishing between ISO standards and reads both Lo-Co and Hi-Co cards.

- Clear beeper and LED indicators
- Reads up to three tracks of information
- User-friendly configuration software
- Reliable for a minimum of one million card swipes
- Compact size for easy installation



▲ ZM-800EC

▲ ZM-800ST



1. Simple design and compact footprint
2. 2 colors & 2 sizes for embedding selections

MODEL	ZM-800ST	ZM-800EC
<b>OPERATIONAL</b>		
Swipe Speed	3 – 60 inches per second, bi-directional	
Magnetic Head Life	1,000,000 times	
Indicator	Tri-color LED and beeper	
Card Swipe Direction	Bi-directional	
Recording Method	Two-frequency coherent phase (F2F) compatible with ISO 7811, ANSI, AAMVA, and California DMV	
Track Number	Maximum 3 tracks	
Slot Width	0.040 inches (1.37 mm)	
Card Thickness	0.015 – 0.045 inches	
System Interface	Keyboard, RS-232, USB HID	
<b>PHYSICAL</b>		
Dimension	90.5 × 33.8 × 28.2 mm	100.0 × 34.8 × 30.1 mm
Weight	130.5 g	198.5 g
Cable	Standard 2M straight	
<b>POWER</b>		
Input Voltage	5 VDC ±10%	
Power Consumption	40 mA maximum	
<b>REGULATORY</b>		
EMC	CE & FCC DOC compliance	
<b>ENVIRONMENTAL</b>		
Operating Temperature	0° C – 55° C (32° F – 131° F)	
Storage Temperature	-30° C – 65° C (-22° F – 149° F)	
Humidity	Maximum 95% non-condensing	

